



# Historic Salina Downtown

## SDI Monthly Newsletter

### In This Issue

[Sales Tax Position](#)

[Magic of Giving Holiday Open House](#)

[Join the Parade of Lights](#)

[Fast Facts](#)

[Available Properties](#)

### Board of Directors

**Clark Renfro**

UMB Bank  
SDI President

**Steve Howe**

Office of  
Congressman Jerry Moran  
SDI Vice President

**Beth Vinson**

Salina Regional Health Center  
SDI Secretary

**Melissa Goetz**

KC&G Business Appraisal  
Associates  
SDI Treasurer

**Lou Appleby**

Appleby & Marsh Architects

**Robin Cates**

On The Pot

**Tony Dong**

Martinelli's Little Italy

**Mike Forristal**

Lee Development LLC

**Jerry Hinrikus**

Sign Pro

**Ken Jennison**

Salina Media Group

**Christy Lauer**

Simply Baby and More

**Kenneth Rinke**

Salina Taco John's

**Jim Sergeant**

Salina Surgical Center

October 2008



The historic Salina downtown, Lee District for ALL your holidays!

### Special Sales Tax Ballot Issue

The Salina Downtown, Inc. Board of Directors voted Tuesday at their regular meeting to support the special sales tax issue appearing on the ballot in November.

The special quarter cent sales tax in effect since 2005 has helped with projects across the City and specifically with several downtown. Specific downtown projects include the new traffic signals, the replacement benches and trash containers, the expanded facade improvement program now called the Development Incentive Program.

Hank Boyer, Park and Recreation Advisory Board Chair, gave a short presentation to the SDI Board explaining the anticipated projects to be funded through the proposed 10 year sales tax increase:

- 36.7% to Property Tax Stabilization
- 33.7% to Salina Aquatic Park
- 21.9% to Street Improvements
- 7.7% to Economic Development

The current Salina sales tax is 7.05%. Passing the proposal would increase the Salina sales tax to 7.20%. That means the sales tax on a \$100 purchase would increase by 15 cents.

If you or your organization would like more information regarding the proposed sales tax increase please call 825-0535. We have speakers available to visit with your club or organization.

## Join a Committee

### SDI Standing Committees

SDI has three standing committees. Any SDI member/partner is welcome to join a committee to help champion a healthy, vibrant downtown community!

#### Business Support and Recruitment meets

4:00 PM the 3rd Thursday of each month.

#### Communications and Advocacy meets as needed.

**Destination Marketing** meets at noon the 2nd Wednesday of each month.

Volunteers encouraged

785-825-0535

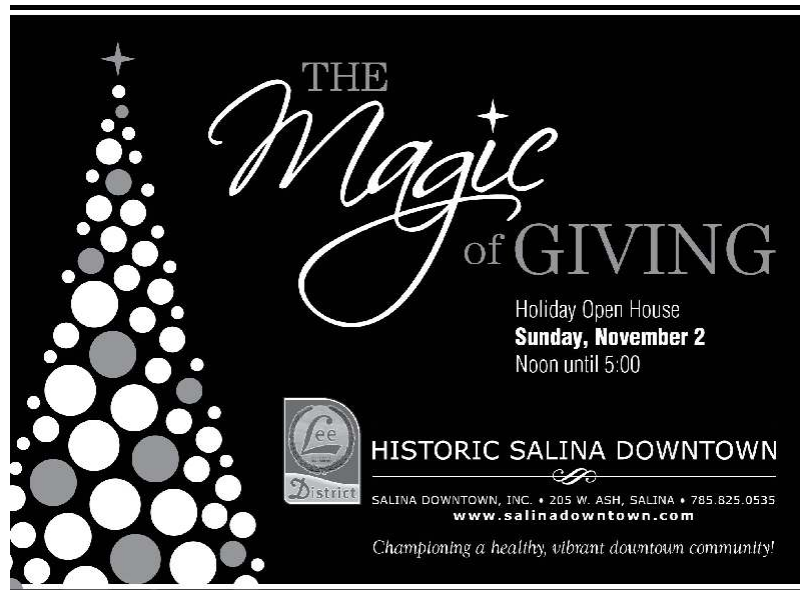
## What's Ahead

- Oct 16 - Business Support & Recruitment Committee Meeting 4:00 PM
- Oct 17 & 18 - Blues Masters at the Crossroads
- Oct 24 - Cultural Roundtable 7:45 Salina Public Library
- Oct 31 - Big BooRama
- Nov 2 - Holiday Open House 12:00 - 5:00
- Nov 6 - First Thursday Art Rush
- Nov 6 - BID/SDI Exec Board Meeting 2:30
- Nov 12 Destination Marketing Committee - Noon
- Nov 13 - Lee District/SDI Board Meeting 3:30

## SDI Staff

Phyll Klima  
Cindy Lamer

## The Magic of Giving Holiday Open House



## Participating Merchants

- Artxpressions
- Auld Lang Syne Antiques & Collectibles
- Best Kept Secret
- Blue Herron Massage
- Borck Brothers Mens Wear
- Dollar General
- Dote on You
- Enchanted Cottage
- Every Little Detail
- Feet Retreat
- The Flower Nook
- Homemade Happiness
- Jilka Furniture
- Martha and David
- Midwest Music
- On The Pot
- Partridge in a Pear Tree
- Prairieland Market
- Quilting Bee
- Sentimental Journey
- Simply Baby & More
- The Arena
- The Market Shop
- The Toy Parade
- Yarns Sold & Told

If your business is not listed above and you intend to participate please call SDI ASAP 785-825-0535

## Join the Parade of Lights!

### There's Still Time!

We need your entry!

The parade will be at 6 p.m. on Saturday, November 22 - for entry information go to [www.salinadowntown.com](http://www.salinadowntown.com).

### Entry Deadline November 17!

## Fast Facts

**Blue Heaven Studios** will host the 11th Annual Blues Masters at the Crossroads October 17 and 18. For more information visit [www.blueheavenstudios.com](http://www.blueheavenstudios.com)

SRHC Gift Shop's holiday open house will be Friday, Nov.7 from 7am-8pm. Everything will be 20% off.

**Salina-Saline County Health Department** will offer flu shots to the general public on Thursday, October 23rd from 11 AM to 6 PM at the 4-H Building in Kenwood Park in Salina. The fee is \$22, payable at the time of injection. Receipts will be available. Please wear short sleeves.

Art a la Carte Concerts at R. Caldwell Plaza (between the Library and City County Building)

Oct 17 Patrick Bihlmaier Original vocals/instrumentals

Oct 24 Dan Bliss Acoustic Blues

### At the Stiefel

Thursday's classic movies @ 7:00 pm \$5

At Salina Art Center About Abstraction: New Approaches by Contemporary Artists and Max-Carlos Martinez: Don't Fence Me In: A Tale a Two Cities.

October 12 - Second Sunday, 2:00 - 4:00 pm

October 18 - Pumpkin Carving, 2:00 - 4:00 pm

November 6 - First Thursday Art Rush, 5:00 - 7:00pm

November 8 - Grape Expectations, 7:00 pm - At the newly renovated Warehouse, 149 S. 4<sup>th</sup> Street, a benefit for education and exhibition programs including wine tasting, hosted bar, cocktail buffet, live music by Jazz Tangent and fabulous auction items. Ticket price: \$40 per person. Call the Art Center at 785-827-1431 to make your reservations!

November 9 - Second Sunday, 2:00 - 4:00 pm

November 12 - Artist Talk: Frank Shaw, 5:30 - 7:00 pm

### Films Showing at the Art Center Cinema:

Oct 3-9 Edge of Heaven

Oct 10-16 Brideshead Revisited

Oct 17-23 Tell No One

Oct 24-30 The Wackness

Check website for show times [www.salinaartcenter.org](http://www.salinaartcenter.org)

### At the Salina Community Theatre

Oct 24-Nov 8 Wait Until Dark

## Available Properties

### Retail(Flexibility)

109-111 N. 7th, Rick Weber, 825-2177\*  
115 E. Iron, Jim Ravenkamp, 493-6065  
210 E. Iron, Wayne & Peg DeBey, 827-0351  
134 S. Santa Fe, Brian Richardson, 452-1130  
145 B S. Santa Fe, Mike Bostater, 825-2188  
200 S. 5th, Jim or Jeff Maes, 493-8500\*  
201 S. 5th, Jim or Jeff Maes, 493-8500\*  
208 A E. Walnut, Jim or Jeff Maes, 493-8500\*

### Office

100 N. 7th, Norm Yenkey, 825-8996  
157 S. 7th, Jim or Jeff Maes, 493-8500  
209 W. Ash, Jim Ravenkamp, 493-6065  
112 W. Iron, Norm Yenkey, 825-8996  
119 W. Iron, 8th floor Farid Afani-Ruzid, 1-785-392-2130  
131 N. Santa Fe, 1st & 2nd floors, John Vanier, 404-2111  
155 A N. 7th, Randy Graham, 825-8100  
156 S. Santa Fe, second floor, Chuck Carroll, 826-0767  
227 N. Santa Fe, 3rd flr, ste 302, Ken Bieberly, 823-9221  
200 S. Santa Fe, Chuck Carroll, 826-0767  
204 S. Santa Fe, Chuck Carroll, 826-0767  
215 S. Santa Fe, Suite 101-2, 204 & 206 Laura  
Skidmore, 643-7221  
210 E. Walnut, Doug Snyder, 493-0530

### Restaurant/Office/Flex

100 N. 5th, Ben Frick, 820-9002  
141 N. Santa Fe, Randy Leister, 826-5624

### Storage

138 S. 4th, Bill Medina, 825-4561

### Loft or Office

134 S. Santa Fe, Brian Richardson, 452-1130

### Parking Lot

117 N 7th, Rick Weber, 825-2177\*

### Business for Sale

· Carol Lee Donuts, 825-5926

\*Property for sale only

If you own available property in the Lee District that is not listed please contact Salina Downtown Inc. at [gosalina@salinadowntown.com](mailto:gosalina@salinadowntown.com) or call 785-825-0535.